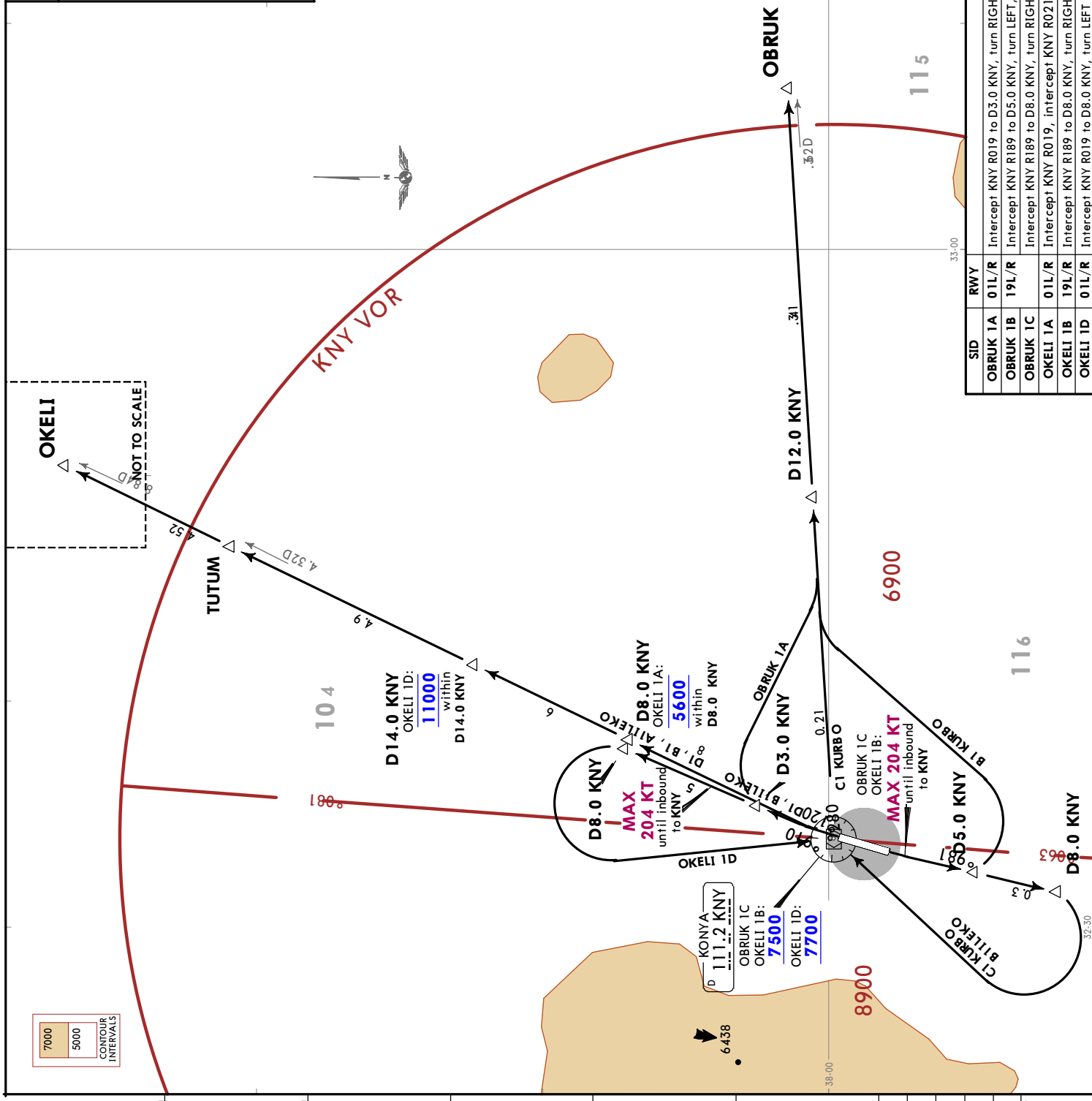


Apt Elev
3392

Trans alt: 10000
EXPECT close-in obstacles.

OBRUK 1A [OBRU1A]
OBRUK 1B [OBRU1B]
OBRUK 1C [OBRU1C]
OKELI 1A [OKEL1A]
OKELI 1B [OKEL1B]
OKELI 1D [OKEL1D]
DEPARTURES
(ALL RWYS)
BASED ON KNY VORDME



These SIDs require minimum climb gradients of

OBRUK 1A, 1B: 4.1% (249 FT/NM) up to 10000.
OKELI 1A, 1D: 4.6% (280 FT/NM) up to 10000.
OBRUK 1C, OKELI 1B: 5% (304 FT/NM) up to 10000.

Gnd speed-KT	75	100	150	200	250	300
4.1% V/V (fpm)	311	415	623	830	1038	1246
4.6% V/V (fpm)	349	466	699	932	1165	1397
5.0% V/V (fpm)	380	506	760	1013	1266	1519

SID	RWY	ROUTING
OBRUK 1A	01L/R	Intercept KNY R019 to D3.0 KNY, turn RIGHT, intercept KNY R082 within D12.0 KNY to OBRUK.
OBRUK 1B	19L/R	Intercept KNY R189 to D5.0 KNY, turn LEFT, intercept KNY R082 within D12.0 KNY to OBRUK.
OBRUK 1C	01L/R	Intercept KNY R189 to D8.0 KNY, turn RIGHT to KNY, KNY R082 to OBRUK.
OKELI 1A	01L/R	Intercept KNY R019, intercept KNY R021 to OKELI.
OKELI 1B	19L/R	Intercept KNY R189 to D8.0 KNY, turn RIGHT to KNY, KNY R021 to OKELI.
OKELI 1D	01L/R	Intercept KNY R019 to D8.0 KNY, turn LEFT to KNY, KNY R021 to OKELI.

LTAN/KYA
KONYA



JEPPESSEN

KONYA, TURKIYE

5 APR 24

10-3B

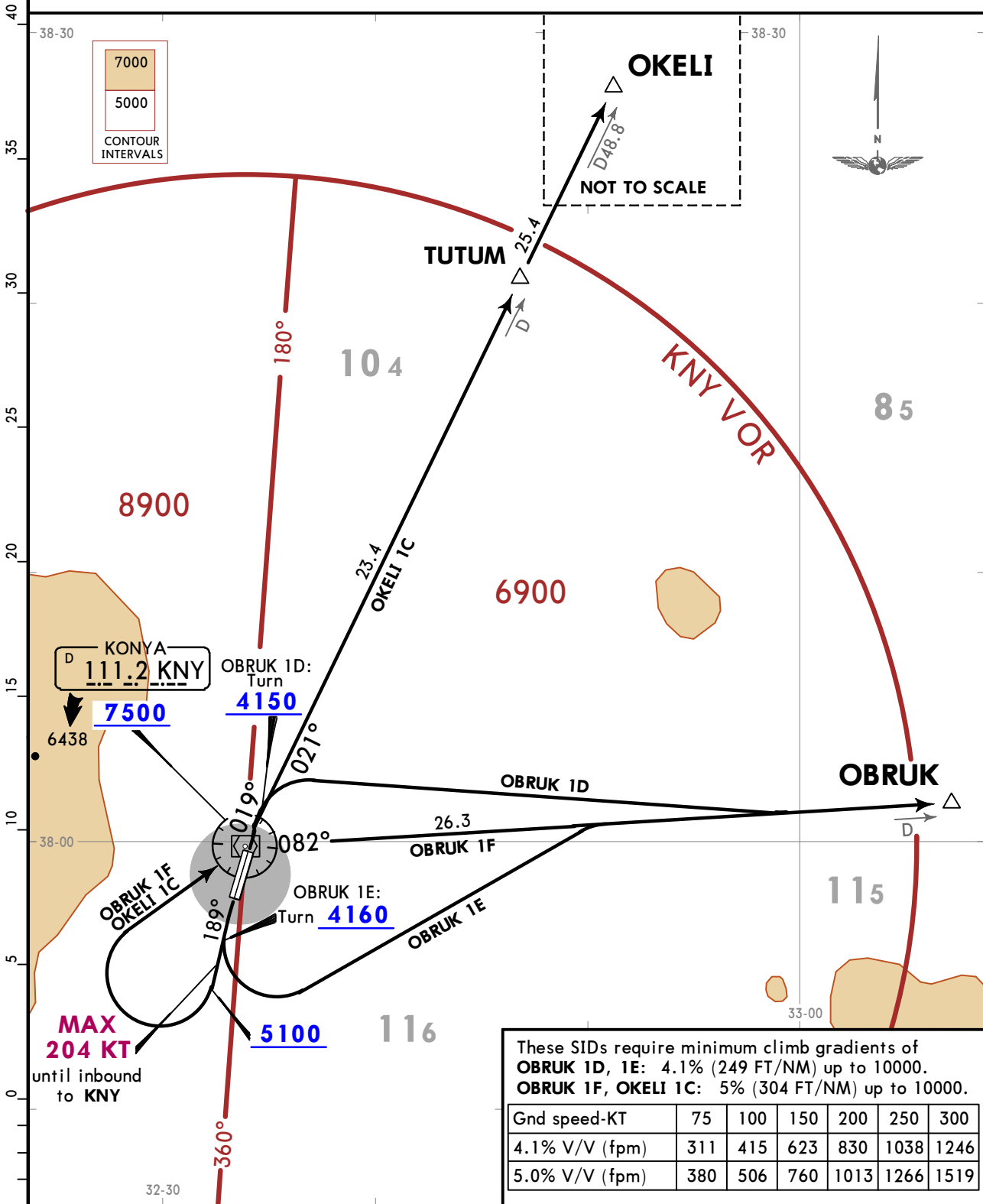
Eff 18 Apr

SID

Apt Elev
3392

Trans alt: 10000
EXPECT close-in obstacles.

OBRUK 1D [OBRU1D], OBRUK 1E [OBRU1E]
OBRUK 1F [OBRU1F], OKELI 1C [OKEL1C]
DEPARTURES
(ALL RWYS)
BASED ON KNY VOR



SID	RWY	ROUTING
OBRUK 1D	01L/R	Intercept and climb on KNY R019 to 4150, turn RIGHT, intercept KNY R082 to OBRUK.
OBRUK 1E	19L/R	Intercept and climb on KNY R189 to 4160, turn LEFT, intercept KNY R082 to OBRUK.
OBRUK 1F		Intercept and climb on KNY R189 to 5100, turn RIGHT to KNY, KNY R082 to OBRUK.
OKELI 1C		Intercept and climb on KNY R189 to 5100, turn RIGHT to KNY, KNY R021 to OKELI.